



COVENTRY  
& RUGBY  
GP ALLIANCE

# PMCF Update

## Best Care, Anywhere

Scrutiny Board 5  
January 6<sup>th</sup> 2016



# PMCF - Best Care, Anywhere



COVENTRY  
& RUGBY  
GP ALLIANCE

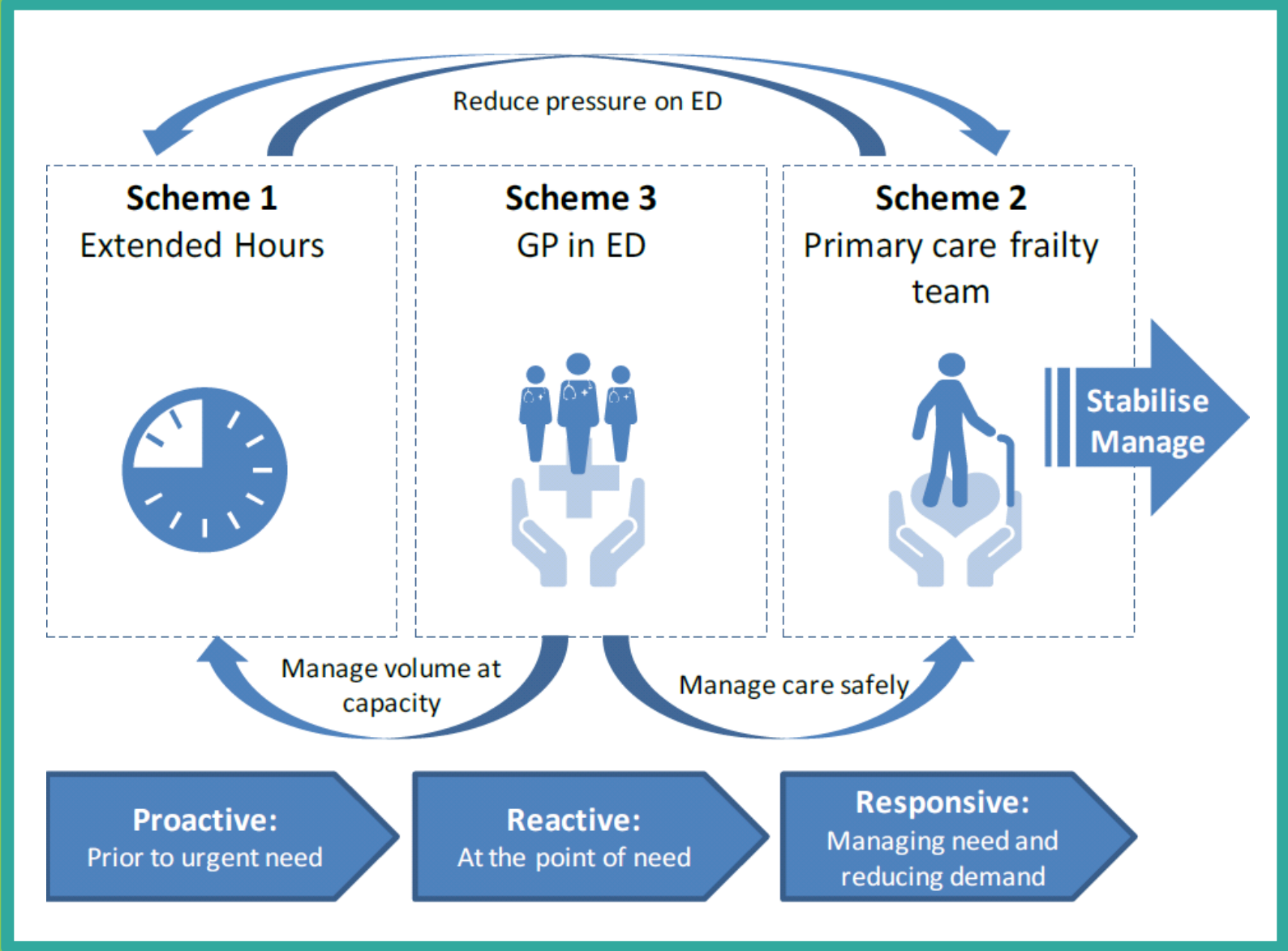
- **Number of patients covered:**  
374,335
- **Number of practices participating:**  
64
- **Names of CCGs covered:**  
NHS Coventry and Rugby CCG
- **Evaluation and IT**
- **National Programme (PMCF) now called the Prime Minister's GP Access Fund...**

# PMCF - Best Care, Anywhere

*“For Coventry and Rugby to be leading the country in new ways of working between hospitals and general practices and community services is truly inspirational.”*

**Dr Steve Allen, Chief Clinical Officer,  
NHS Coventry & Rugby CCG**

# PMCF - Best Care, Anywhere



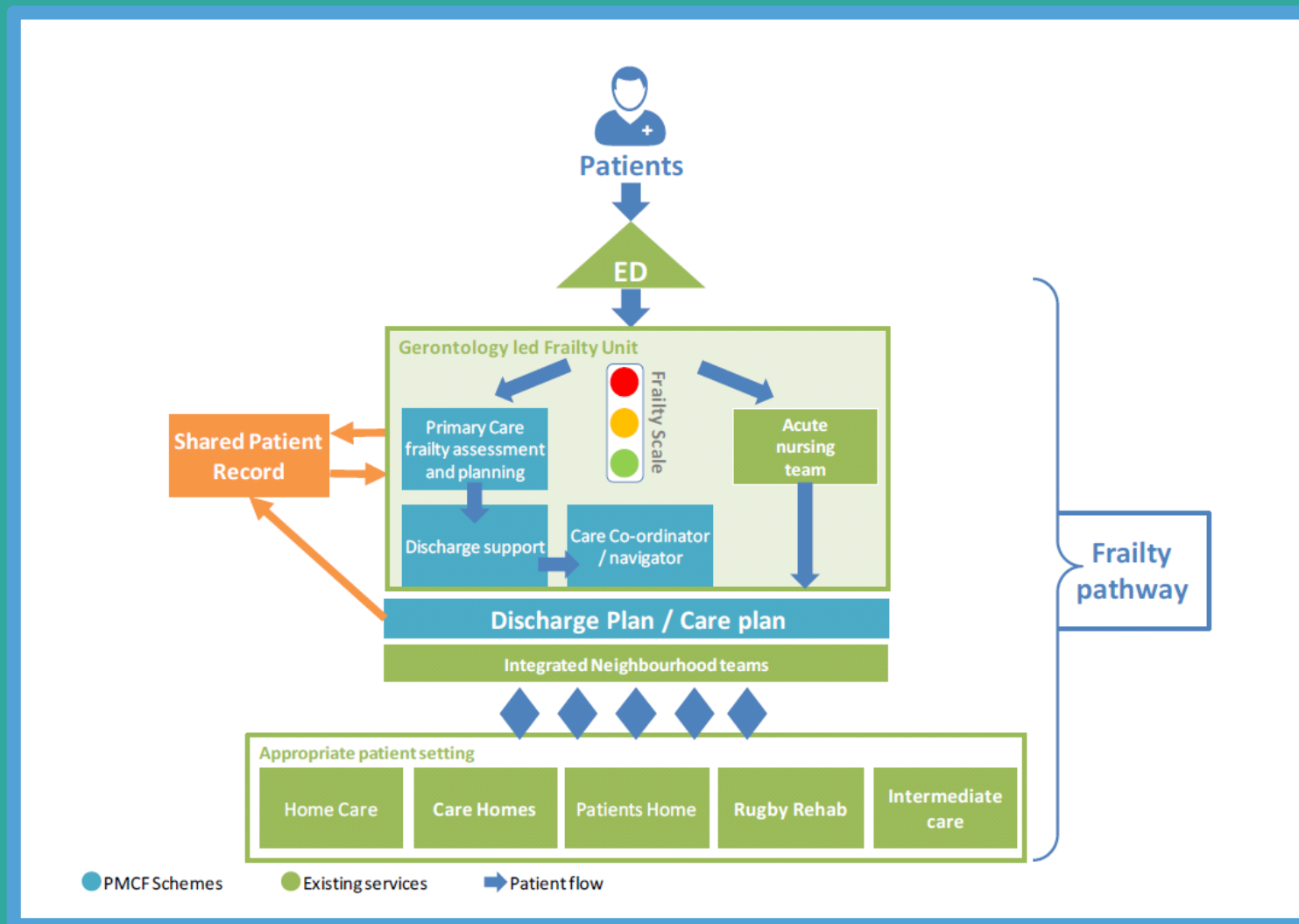
# PMCF - Best Care, Anywhere

*“The Prime Ministers Challenge Fund award gave us the resources to deliver even better care for patients even quicker than we had been hoping before.”*

**Dr Steve Allen, Chief Clinical Officer,  
NHS Coventry & Rugby CCG**

# Scheme 1 – Frailty

## Context



# Scheme 1 – Frailty

## Context

*“Patients are able to return home earlier with proper support which helps them to recover in the security of their own homes under the care of their GP that they know and trust.”*

**Alison Gingell, Lay Chair, Coventry and Rugby GP Alliance**

# Scheme 1 – Frailty

## Challenges, progress & where next

### Challenges

- UHCW - acute care strategy
- Recruitment/ HR and DBS checks
- Contract variations
- IT - 'live' frailty care plan

### Progress

- Gone live & team working on gerontology ward

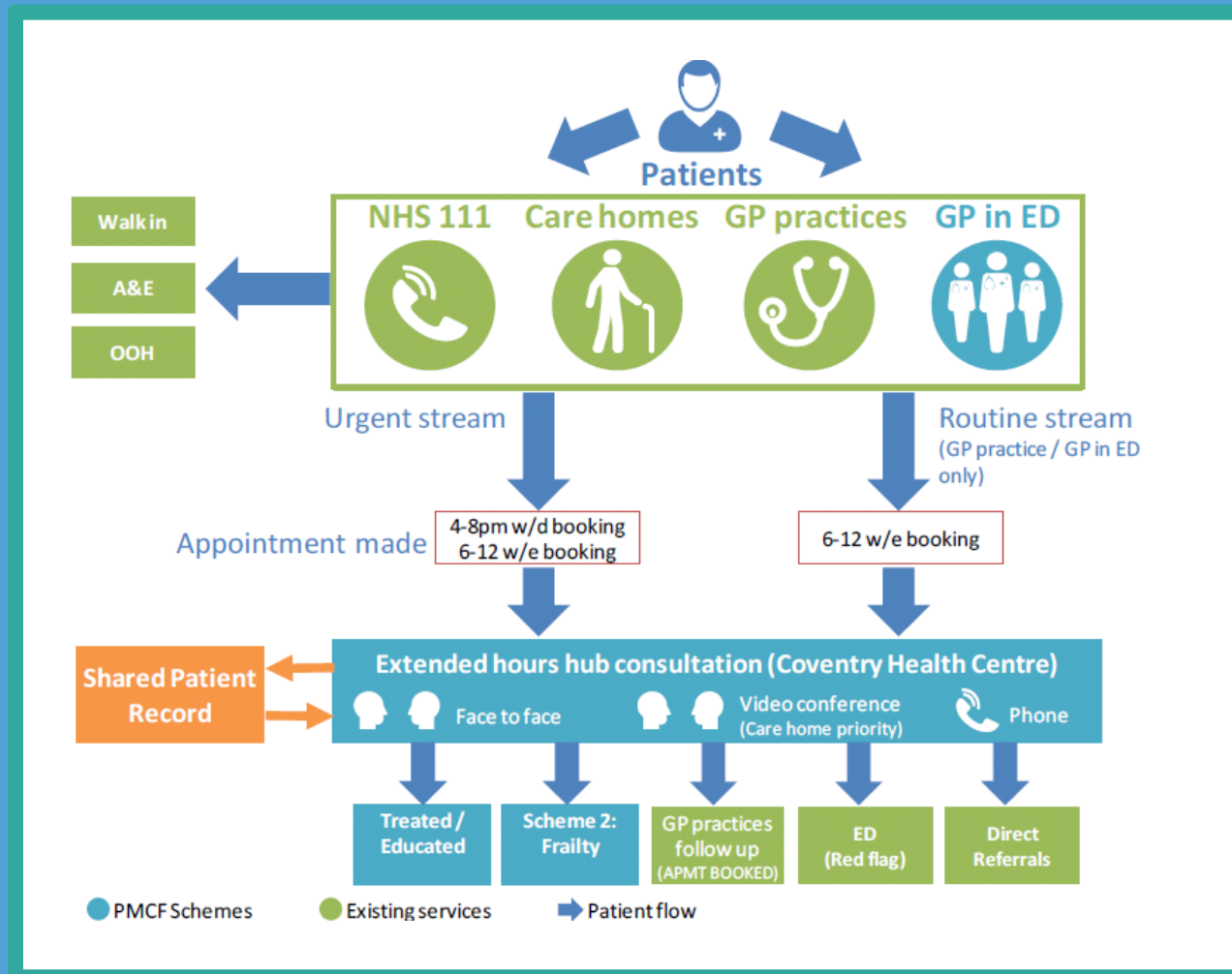
### Where next?

- Specific beds and base for team in the right environment in the hospital
- Recruitment into community to ensure adequate personnel to support rapid discharge
- Develop with black pear - live care plan



# Scheme 2 – Extended Hours

## Context



# Scheme 2 – Extended Hours

## Context

*“It is nice to get the option to come in the evening and not have to fight with your employee for time off in the day to visit the GP. Good parking, premises, receptionist and the GP was lovely!”*

**Coventry patient**

# Scheme 2 – Extended Hours

## Challenges, progress & where next

### Challenges

- CQC
- IT

### Progress

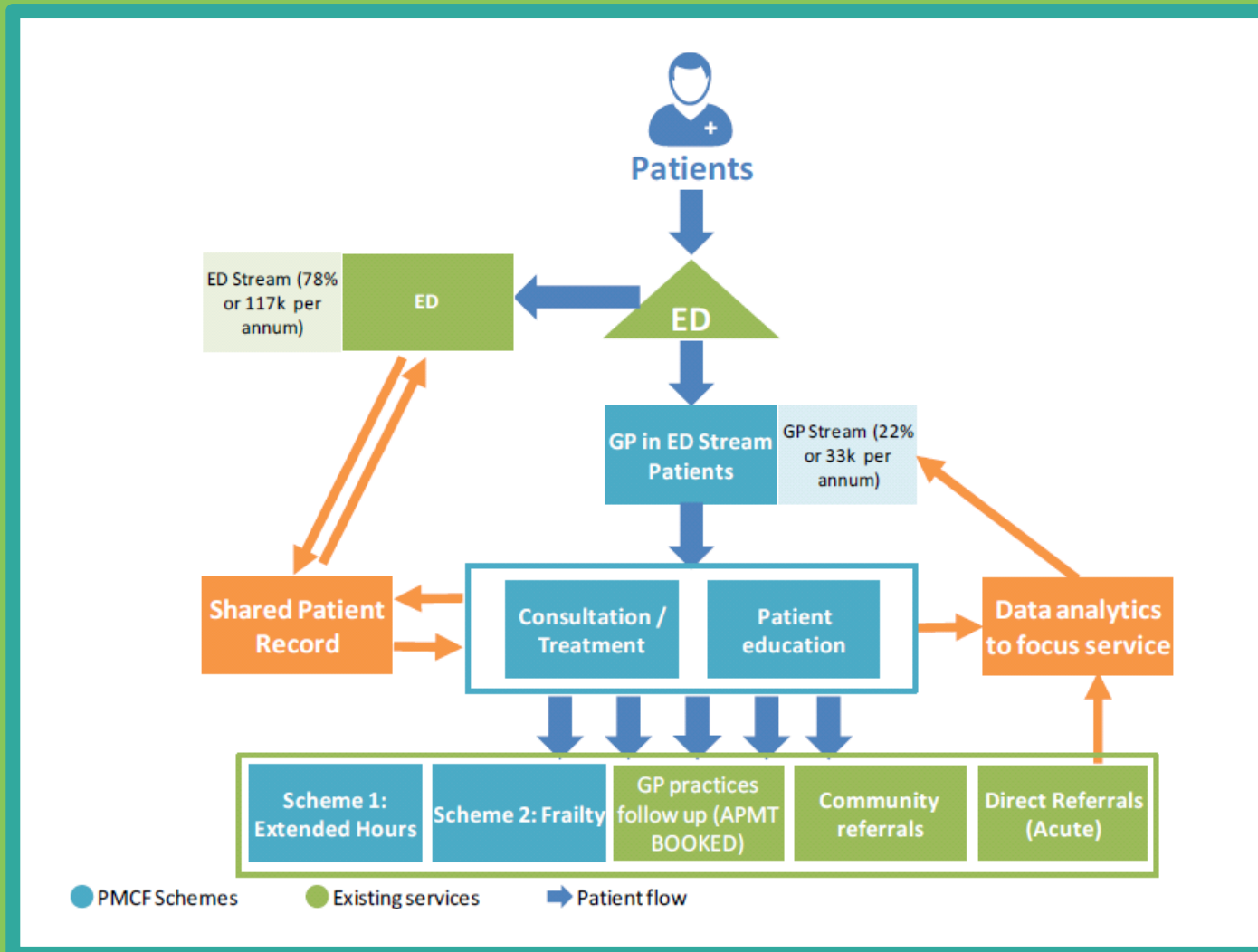
- CQC
- IT
- Gone live
- 7 day service
- Recruitment
- Evaluation

### Where next?

- Add in Skype/telephone appointments especially looking at Nursing Home.
- Coordinate OOH services across the city into a seamless single service

# Scheme 3 – GP in ED

## Context



# Scheme 3 – GP in ED

## Context

*“The Prime Minister's Challenge Fund has enabled the Emergency Department at the Acute Hospital and the GP Alliance to now have strong collaborative relationship working together to deliver an effective Primary Care presence within the Urgent Care setting at the Hospital.”*

**Dr Jim Davidson,  
Associate Medical Director**

# Scheme 3 – GP in ED

Challenges, progress & where next

## Challenges

- IT
- Culture change

## Progress

- Culture
- 7 day service

## Where next?

- Evolves to complex discharge planning
- Link with frailty scheme
- IT go-live

# Achievements & Learning Points

*“The award of the of the Prime Ministers Challenge Fund to Coventry and Rugby GP Alliance has been a timely boost to the provision of Primary Care services to the people of Coventry and Rugby. Coventry has a large problem with health inequalities and social deprivation. The projects undertaken by the Alliance are addressing some of these problems by increasing access to General Practice out of hours, making sure that there is a robust General Practice influence in A&E and improving care of the ageing population through the development of a Frailty Unit. Coventry LMC is fully supportive of these developments and is involved with the oversight of the rollout.”*

**Dr Jamie Macpherson , LMC Secretary**

# Achievements...

- 3 clinical schemes up and running
- CQC registration
- New activities and development secured
  - CPEN, Admiral Nurses, Care Home Flu Jabs
- Significant Alliance Organisational Development
- CCG support



# Development Points...

- System not prepared for Federations
- ICT, Information Sharing and HSCIC
- National and local Evaluation
- Funding flows
- Central Support



COVENTRY  
& RUGBY  
GP ALLIANCE

## Questions & Discussion

